

Quinquela

Symbol	Price	Change	Volume
XXXX	1234.5	+12.3	1000
YYYY	5678.9	-5.6	2000
ZZZZ	9012.3	+3.4	500
AAAA	3456.7	-2.1	1500
BBBB	7890.1	+8.9	3000
CCCC	2345.6	-1.2	800
DDDD	6789.0	+4.5	1200
EEEE	1012.3	-0.8	600
FFFF	4567.8	+7.6	900
GGGG	8901.2	-3.2	1100
HHHH	3210.9	+1.5	700
IIII	7654.3	-6.7	1300
JJJJ	1987.6	+2.4	500
KKKK	5432.1	-4.1	1000
LLLL	9876.5	+9.8	2500
MMMM	2109.8	-0.5	400
NNNN	6543.2	+5.3	1400
OOOO	1321.0	-2.9	600
PPPP	4876.5	+6.1	1100
QQQQ	8109.2	-1.7	800
RRRR	3543.7	+3.8	700
SSSS	7012.4	-5.4	1200
TTTT	1567.8	+1.1	500
UUUU	5901.3	-3.6	1000
VVVV	9234.6	+7.2	2000
WWWW	2876.9	-1.9	600
XXXX	6310.2	+4.7	1300
YYYY	1098.5	-0.3	400
ZZZZ	4654.8	+8.5	1500
AAAA	8012.1	-2.7	900
BBBB	3456.4	+5.9	1100
CCCC	7890.7	-4.3	1400
DDDD	1234.0	+1.6	500
EEEE	5678.3	-3.1	1000
FFFF	9012.6	+6.4	2000
GGGG	2345.9	-0.9	600
HHHH	6789.2	+3.7	1200
IIII	1012.5	-1.4	500
JJJJ	4567.8	+7.0	1100
KKKK	8901.1	-2.5	800
LLLL	3210.4	+4.2	700
MMMM	7654.7	-5.8	1300
NNNN	1987.0	+1.0	500
OOOO	5432.3	-3.4	1000
PPPP	9876.6	+8.1	2500
QQQQ	2109.9	-0.6	400
RRRR	6543.2	+5.5	1400
SSSS	1321.3	-2.2	600
TTTT	4876.6	+6.8	1100
UUUU	8109.9	-1.1	800
VVVV	3543.2	+3.5	700
WWWW	7012.5	-4.8	1200
XXXX	1567.8	+1.3	500
YYYY	5901.2	-3.0	1000
ZZZZ	9234.5	+7.5	2000
AAAA	2876.8	-1.6	600
BBBB	6310.1	+4.4	1300
CCCC	1098.4	-0.4	400
DDDD	4654.7	+8.2	1500
EEEE	8012.0	-2.0	900
FFFF	3456.3	+5.7	1100
GGGG	7890.6	-4.5	1400
HHHH	1234.9	+1.8	500
IIII	5678.2	-3.3	1000
JJJJ	9012.5	+6.6	2000
KKKK	2345.8	-0.7	600
LLLL	6789.1	+3.9	1200
MMMM	1012.4	-1.5	500
NNNN	4567.7	+7.3	1100
OOOO	8901.0	-2.8	800
PPPP	3210.3	+4.1	700
QQQQ	7654.6	-5.2	1300
RRRR	1987.9	+1.2	500
SSSS	5432.2	-3.7	1000
TTTT	9876.5	+8.4	2500
UUUU	2109.8	-0.8	400
VVVV	6543.1	+5.6	1400
WWWW	1321.2	-2.3	600
XXXX	4876.5	+6.9	1100
YYYY	8109.8	-1.3	800
ZZZZ	3543.1	+3.6	700
AAAA	7012.4	-4.9	1200
BBBB	1567.7	+1.4	500
CCCC	5901.1	-3.2	1000
DDDD	9234.4	+7.8	2000
EEEE	2876.7	-1.7	600
FFFF	6310.0	+4.3	1300
GGGG	1098.3	-0.5	400
HHHH	4654.6	+8.0	1500
IIII	8012.9	-2.1	900
JJJJ	3456.2	+5.4	1100
KKKK	7890.5	-4.6	1400
LLLL	1234.8	+1.9	500
MMMM	5678.1	-3.5	1000
NNNN	9012.4	+6.7	2000
OOOO	2345.7	-0.9	600
PPPP	6789.0	+3.8	1200
QQQQ	1012.3	-1.6	500
RRRR	4567.6	+7.1	1100
SSSS	8901.9	-2.6	800
TTTT	3210.2	+4.0	700
UUUU	7654.5	-5.1	1300
VVVV	1987.8	+1.1	500
WWWW	5432.1	-3.4	1000
XXXX	9876.4	+8.3	2500
YYYY	2109.7	-0.7	400
ZZZZ	6543.0	+5.5	1400
AAAA	1321.1	-2.4	600
BBBB	4876.4	+6.8	1100
CCCC	8109.7	-1.4	800
DDDD	3543.0	+3.7	700
EEEE	7012.3	-4.8	1200
FFFF	1567.6	+1.5	500
GGGG	5901.0	-3.1	1000
HHHH	9234.3	+7.6	2000
IIII	2876.6	-1.8	600
JJJJ	6310.9	+4.2	1300
KKKK	1098.2	-0.6	400
LLLL	4654.5	+8.1	1500
MMMM	8012.8	-2.2	900
NNNN	3456.1	+5.3	1100
OOOO	7890.4	-4.7	1400
PPPP	1234.7	+2.0	500
QQQQ	5678.0	-3.6	1000
RRRR	9012.3	+6.5	2000
SSSS	2345.6	-1.0	600
TTTT	6789.9	+3.9	1200
UUUU	1012.2	-1.7	500
VVVV	4567.5	+7.4	1100
WWWW	8901.8	-2.7	800
XXXX	3210.1	+4.1	700
YYYY	7654.4	-5.3	1300
ZZZZ	1987.7	+1.3	500
AAAA	5432.0	-3.8	1000
BBBB	9876.3	+8.6	2500
CCCC	2109.6	-0.8	400
DDDD	6543.9	+5.7	1400
EEEE	1321.0	-2.5	600
FFFF	4876.3	+6.9	1100
GGGG	8109.6	-1.5	800
HHHH	3543.9	+3.6	700
IIII	7012.2	-4.9	1200
JJJJ	1567.5	+1.6	500
KKKK	5901.8	-3.3	1000
LLLL	9234.1	+7.7	2000
MMMM	2876.4	-1.9	600
NNNN	6310.7	+4.3	1300
OOOO	1098.1	-0.7	400
PPPP	4654.4	+8.2	1500
QQQQ	8012.7	-2.3	900
RRRR	3456.0	+5.4	1100
SSSS	7890.3	-4.6	1400
TTTT	1234.6	+2.1	500
UUUU	5678.9	-3.7	1000
VVVV	9012.2	+6.6	2000
WWWW	2345.5	-1.1	600
XXXX	6789.8	+3.8	1200
YYYY	1012.1	-1.8	500
ZZZZ	4567.4	+7.2	1100
AAAA	8901.7	-2.8	800
BBBB	3210.0	+4.0	700
CCCC	7654.3	-5.2	1300
DDDD	1987.6	+1.4	500
EEEE	5432.9	-3.5	1000
FFFF	9876.2	+8.4	2500
GGGG	2109.5	-0.9	400
HHHH	6543.8	+5.6	1400
IIII	1321.3	-2.6	600
JJJJ	4876.6	+6.8	1100
KKKK	8109.9	-1.6	800
LLLL	3543.2	+3.7	700
MMMM	7012.1	-4.8	1200
NNNN	1567.4	+1.7	500
OOOO	5901.7	-3.4	1000
PPPP	9234.0	+7.5	2000
QQQQ	2876.3	-2.0	600
RRRR	6310.6	+4.4	1300
SSSS	1098.0	-0.8	400
TTTT	4654.7	+8.3	1500
UUUU	8012.6	-2.4	900
VVVV	3456.9	+5.5	1100
WWWW	7890.2	-4.7	1400
XXXX	1234.5	+2.2	500
YYYY	5678.8	-3.8	1000
ZZZZ	9012.1	+6.7	2000
AAAA	2345.4	-1.2	600
BBBB	6789.7	+3.9	1200
CCCC	1012.0	-1.9	500
DDDD	4567.3	+7.3	1100
EEEE	8901.6	-2.9	800
FFFF	3210.9	+4.1	700
GGGG	7654.2	-5.4	1300
HHHH	1987.5	+1.5	500
IIII	5432.8	-3.6	1000
JJJJ	9876.1	+8.5	2500
KKKK	2109.4	-1.0	400
LLLL	6543.7	+5.8	1400
MMMM	1321.6	-2.7	600
NNNN	4876.9	+6.9	1100
OOOO	8109.2	-1.7	800
PPPP	3543.5	+3.8	700
QQQQ	7012.8	-4.9	1200
RRRR	1567.1	+1.8	500
SSSS	5901.4	-3.5	1000
TTTT	9234.7	+7.6	2000
UUUU	2876.0	-2.1	600
VVVV	6310.3	+4.5	1300
WWWW	1098.6	-0.9	400
XXXX	4654.0	+8.4	1500
YYYY	8012.9	-2.5	900
ZZZZ	3456.2	+5.6	1100
AAAA	7890.5	-4.8	1400
BBBB	1234.8	+2.3	500
CCCC	5678.1	-3.9	1000
DDDD	9012.4	+6.8	2000
EEEE	2345.7	-1.3	600
FFFF	6789.0	+4.0	1200
GGGG	1012.3	-2.0	500
HHHH	4567.6	+7.4	1100
IIII	8901.9	-3.0	800
JJJJ	3210.2	+4.2	700
KKKK	7654.5	-5.5	1300
LLLL	1987.8	+1.6	500
MMMM	5432.1	-3.7	1000
NNNN	9876.4	+8.6	2500
OOOO	2109.7	-1.1	400
PPPP	6543.0	+5.7	1400
QQQQ	1321.4	-2.8	600
RRRR	4876.7	+6.9	1100
SSSS	8109.0	-1.8	800
TTTT	3543.3	+3.9	700
UUUU	7012.6	-4.9	1200
VVVV	1567.9	+1.9	500
WWWW	5901.2	-3.6	1000
XXXX	9234.5	+7.7	2000
YYYY	2876.8	-2.2	600
ZZZZ	6310.1	+4.6	1300
AAAA	1098.9	-1.0	400
BBBB	4654.2	+8.5	1500
CCCC	8012.5	-2.6	900
DDDD	3456.8	+5.8	1100
EEEE	7890.1	-4.7	1400
FFFF	1234.4	+2.4	500
GGGG	5678.7	-4.0	1000
HHHH	9012.0	+6.9	2000
IIII	2345.6	-1.4	600
JJJJ	6789.3	+4.1	1200
KKKK	1012.6	-2.1	500
LLLL	4567.9	+7.5	1100
MMMM	8901.2	-3.1	800
NNNN	3210.5	+4.3	700
OOOO	7654.8	-5.6	1300
PPPP	1987.1	+1.7	500
QQQQ	5432.4	-3.8	1000
RRRR	9876.7	+8.7	2500
SSSS	2109.0	-1.2	400
TTTT	6543.5	+5.9	1400
UUUU	1321.7	-2.9	600
VVVV	4876.0	+7.0	1100
WWWW	8109.3	-2.0	800
XXXX	3543.6	+4.0	700
YYYY	7012.9	-5.0	1200
ZZZZ	1567.2	+2.0	500
AAAA	5901.5	-3.7	1000
BBBB	9234.8	+7.8	2000
CCCC	2876.1	-2.3	600
DDDD	6310.4	+4.7	1300
EEEE	1098.2	-1.1	400
FFFF	4654.5	+8.6	1500
GGGG	8012.8	-2.7	900
HHHH	3456.1	+5.9	1100
IIII	7890.4	-4.8	1400
JJJJ	1234.7	+2.5	500
KKKK	5678.0	-4.1	1000
LLLL	9012.3	+6.8	2000
MMMM	2345.0	-1.5	600
NNNN	6789.6	+4.2	1200
OOOO	1012.9	-2.2	500
PPPP	4567.2	+7.6	1100
QQQQ	8901.5	-3.2	800
RRRR	3210.8	+4.4	700
SSSS	7654.1	-5.7	1300
TTTT	1987.4	+1.8	500
UUUU	5432.7	-3.9	1000
VVVV	9876.0	+8.8	2500
WWWW	2109.3	-1.3	400
XXXX	6543.8	+6.0	1400
YYYY	1321.0	-3.0	600
ZZZZ	4876.3	+7.1	1100
AAAA	8109.6	-2.1	800
BBBB	3543.9	+4.1	700
CCCC	7012.2	-5.1	1200
DDDD	1567.5	+2.1	500
EEEE	5901.8	-3.8	1000
FFFF	9234.1	+7.9	2000
GGGG	2876.4	-2.4	600
HHHH	6310.7	+4.8	1300
IIII	1098.0	-1.2	400
JJJJ	4654.4	+8.7	1500
KKKK	8012.7	-2.8	900
LLLL	3456.0	+6.1	1100
MMMM	7890.3	-4.9	1400
NNNN	1234.6	+2.6	500
OOOO	5678.9	-4.2	1000
PPPP	9012.2	+6.9	2000
QQQQ	2345.7	-1.6	600
RRRR	6789.0	+4.3	1200
SSSS	1012.4	-2.3	500
TTTT	4567.7	+7.7	1100
UUUU	8901.0	-3.3	800
VVVV	3210.5	+4.5	700
WWWW	7654.8	-5.8	1300
XXXX	1987.1	+1.9	500
YYYY	5432.4	-4.0	1000
ZZZZ	9876.7	+8.9	2500
AAAA	2109.6	-1.4	400
BBBB	6543.9	+6.2	1400
CCCC	1321.3	-3.1	600
DDDD	4876.6	+7.2	1100
EEEE	8109.9	-2.2	800
FFFF	3543.2	+4.2	700
GGGG	7012.5	-5.2	1200
HHHH			

QUINQUELA PESOS

Datos del Fondo al: 30-06-2023

- Tipo de inversión:
- Moneda:
- Plazo de Rescate:
- Horizonte:
- Patrimonio Administrado:
- Vida Promedio del Fondo:
- Vida Promedio Inversiones:
- Calificación de Riesgo en moneda local Fix SCR S.A.:

Mercado de Dinero
Pesos Argentinos
Inmediato
Corto Plazo
\$61.145.742.531
5,61 días
13,24 días
AAf(arg)

TOP 20 CLIENTES

Cuotapartista	% s/ PN
Cuotapartista 1	10,64%
Cuotapartista 2	7,53%
Cuotapartista 3	5,32%
Cuotapartista 4	4,39%
Cuotapartista 5	3,87%
Cuotapartista 6	3,84%
Cuotapartista 7	3,81%
Cuotapartista 8	3,28%
Cuotapartista 9	2,94%
Cuotapartista 10	2,12%
Cuotapartista 11	1,98%
Cuotapartista 12	1,98%
Cuotapartista 13	1,97%
Cuotapartista 14	1,95%
Cuotapartista 15	1,70%
Cuotapartista 16	1,63%
Cuotapartista 17	1,62%
Cuotapartista 18	1,52%
Cuotapartista 19	1,28%
Cuotapartista 20	1,16%

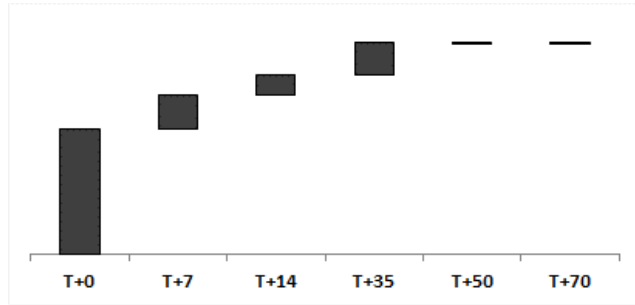
POR SEGMENTO

Cuotapartista	%	Exigencia
FONDO COMUN DE INVERSION	20,40%	75%
CORPORATE	36,25%	50%
ACDI	37,92%	50%
SEGUROS	4,07%	75%
ENTIDADES FINANCIERAS	0,84%	50%
PERSONAS HUMANAS	0,52%	75%
PYMES	0,00%	75%
	AUM	Necesidad de Liquidez
	100,00%	56,25%

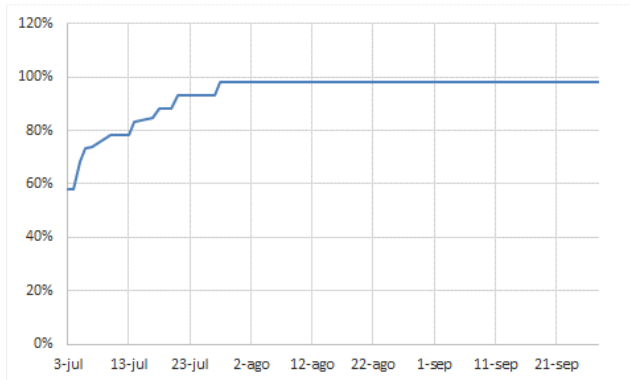
DISPERSIÓN

% s/ PN	Primeros 10	Primeros 20	Primeros 50
	47,74%	64,52%	85,18%

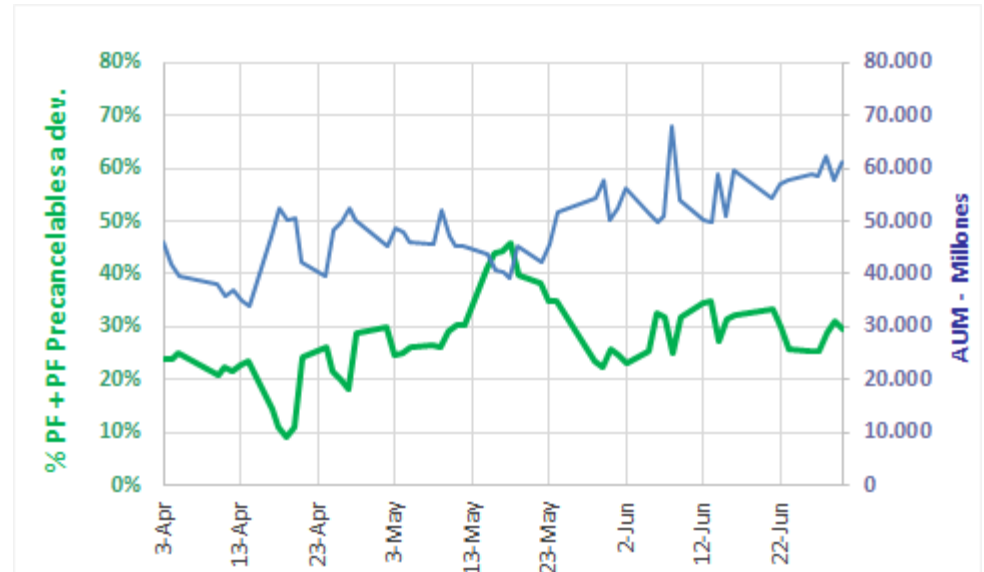
CASCADA DE LIQUIDEZ



EVOLUCIÓN DE LIQUIDEZ



EVOLUCIÓN AUM E INVERSIONES

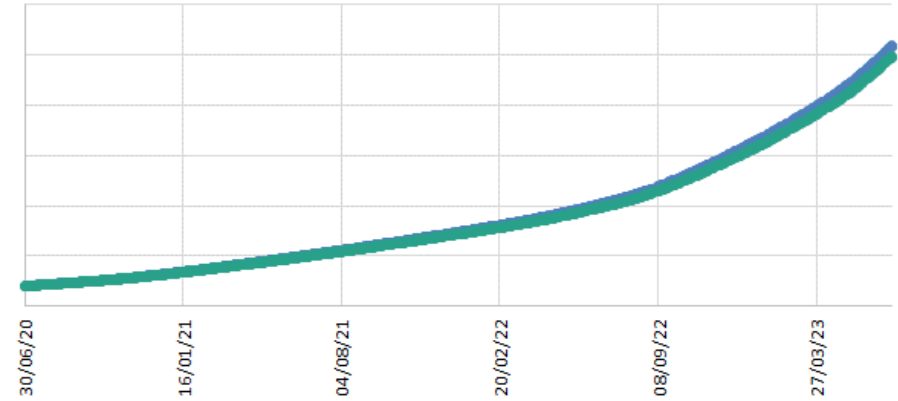


QUINQUELA PESOS

Datos del Fondo al: 30-06-2023

El FCI Quinquela Pesos no posee en su cartera activos a mercado.

	1 Mes	6 Meses	1 Año	3 Años
Clase A	83,13%	80,75%	83,63%	76,06%
Volatilidad Acumulada	3,85%	3,19%	2,86%	2,19%
Clase B	84,55%	82,60%	86,00%	79,55%
Volatilidad Acumulada	3,91%	3,25%	2,91%	2,24%
Variación Patrimonial	11.310.001.733 23%	30.647.392.146 100%	27.961.732.986 84%	47.162.363.661 333%





NUESTRO ARTE, SABER INVERTIR